

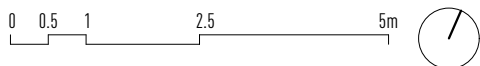
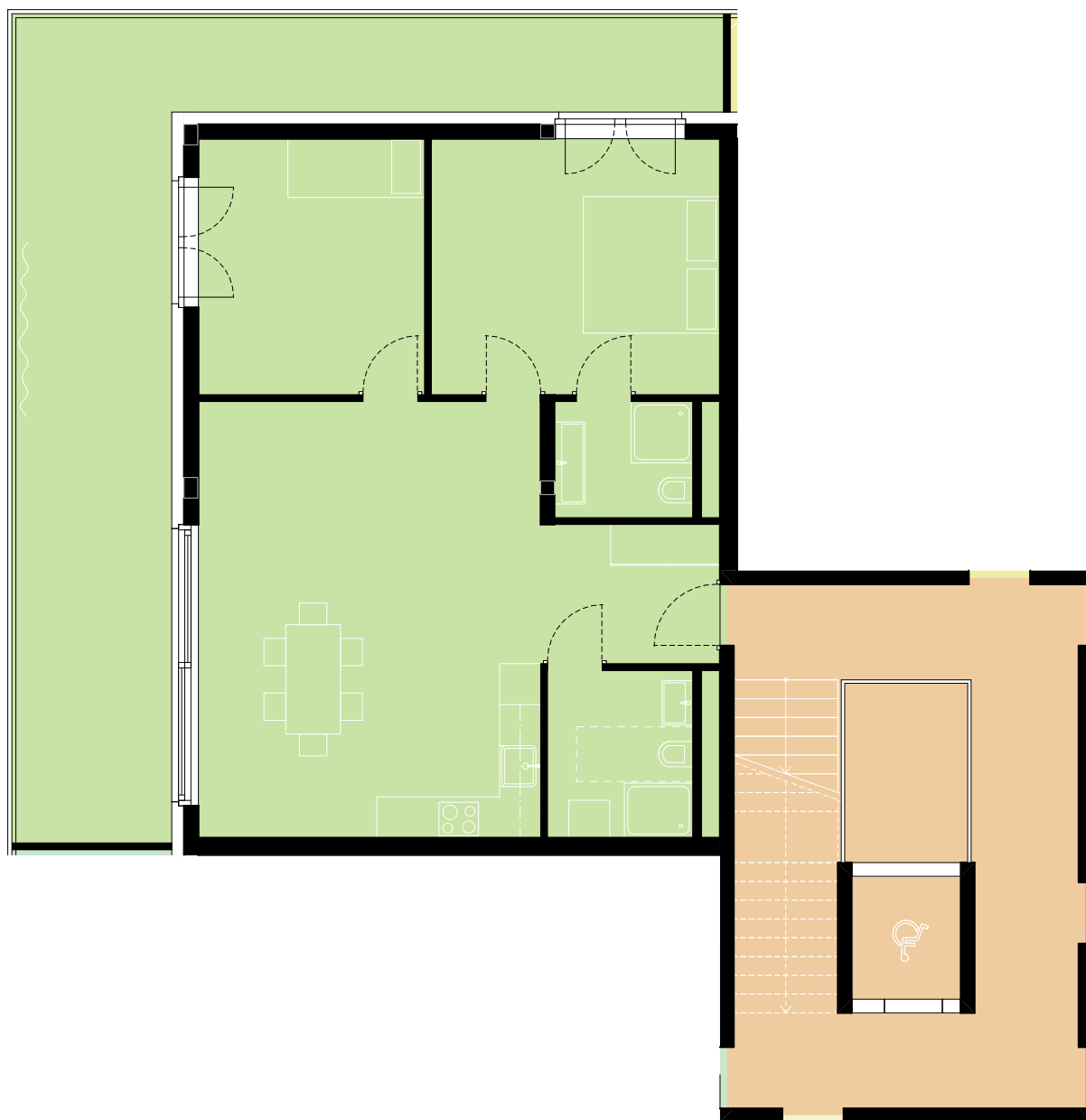
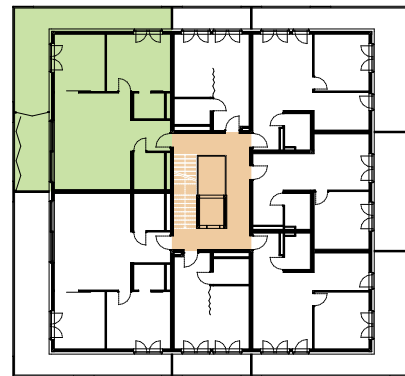
# B

ETAGES 1/2/3

## LE PALLADIO

**B-1.6/2.6/3.6**

3.5 pièces  
appartement : 87.5m<sup>2</sup>  
balcon : 41.5m<sup>2</sup>



**ALPES ET LAC SA - Alexandre Günsberg**  
PROMOTION ET VENTE IMMOBILIERE  
RUE DE LA DIXENCE 49  
CH-1950 SION

**LE PALLADIO-CONSTRUCTION DE DEUX IMMEUBLES DE LOGEMENTS A CONTHEY**  
PARCELLE 862  
ROUTE D'ANTZERE  
1964 CONTHEY | VS

1:500, 1:100  
LAC.PV.B.1.100.A-1.6/2.6/3.6.B  
Date | 17.11.22